



FUTURE READY SCHOOLS®

Interactive Planning Dashboard

Future Ready Schools® (FRS) is the nation's largest network of innovative and passionate educators committed to the belief that every child deserves equitable access to a personalized learning environment anchored in authentic and engaging experiences. The network emphasizes vision, culture, leadership, strong pedagogy, goal setting, and the critical role of "people" in personalized learning. Beginning with a systemic planning process, FRS helps school districts develop and promote modern practices to empower personal and authentic learning experiences that leverage technology to prepare students for success in college, a career, and citizenship.

FRS is led by the **Alliance for Excellent Education** (All4Ed) alongside a vast coalition of national and regional partners. Since FRS's inception in 2014, more than 3,400 school district superintendents have committed their districts to creating student-centered learning environments by signing the **FRS District Pledge**.

To help districts plan and implement personalized, research-based digital learning strategies, FRS created an **interactive planning dashboard**. This free online platform guides district leadership teams through a **five-step planning process** for developing efficient, strategic, and systemic plans that

leverage technology to engage students, empower teachers, and improve learning outcomes. Through the FRS dashboard, district leaders assess their needs, identify gaps in their readiness for technology-enhanced initiatives, set goals and strategies, plan, and track their progress over time.

Implementing meaningful, student-centered learning requires far more than simply purchasing devices for a school district. Shifting the learning experience for students involves thoughtful planning, preparation, and analysis of student outcomes, teacher development, a supportive culture, and strong leadership. The FRS dashboard builds capacity in these areas as it guides school district leaders through its systemic planning process, which culminates in a comprehensive action plan for implementing digital learning prior to designating funds on technology resources. This strategic planning process ensures a smooth implementation of districtwide digital initiatives.

At the heart of the dashboard is the **Future Ready Framework** that places student-centered learning at the center, emphasizes collaborative leadership, and focuses on seven essential components of a digital transition known as "gears":

1. Curriculum, Instruction, and Assessment
2. Personalized Professional Learning
3. Budget and Resources
4. Community Partnerships
5. Data and Privacy
6. Robust Infrastructure
7. Use of Space and Time

Using the FRS dashboard, district teams complete an in-depth leadership self-assessment and highly detailed gear assessments to determine their overall readiness to undergo a digital transition, create a vision for student learning, and determine aspects of the system they must address to make that vision a reality.

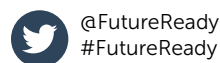
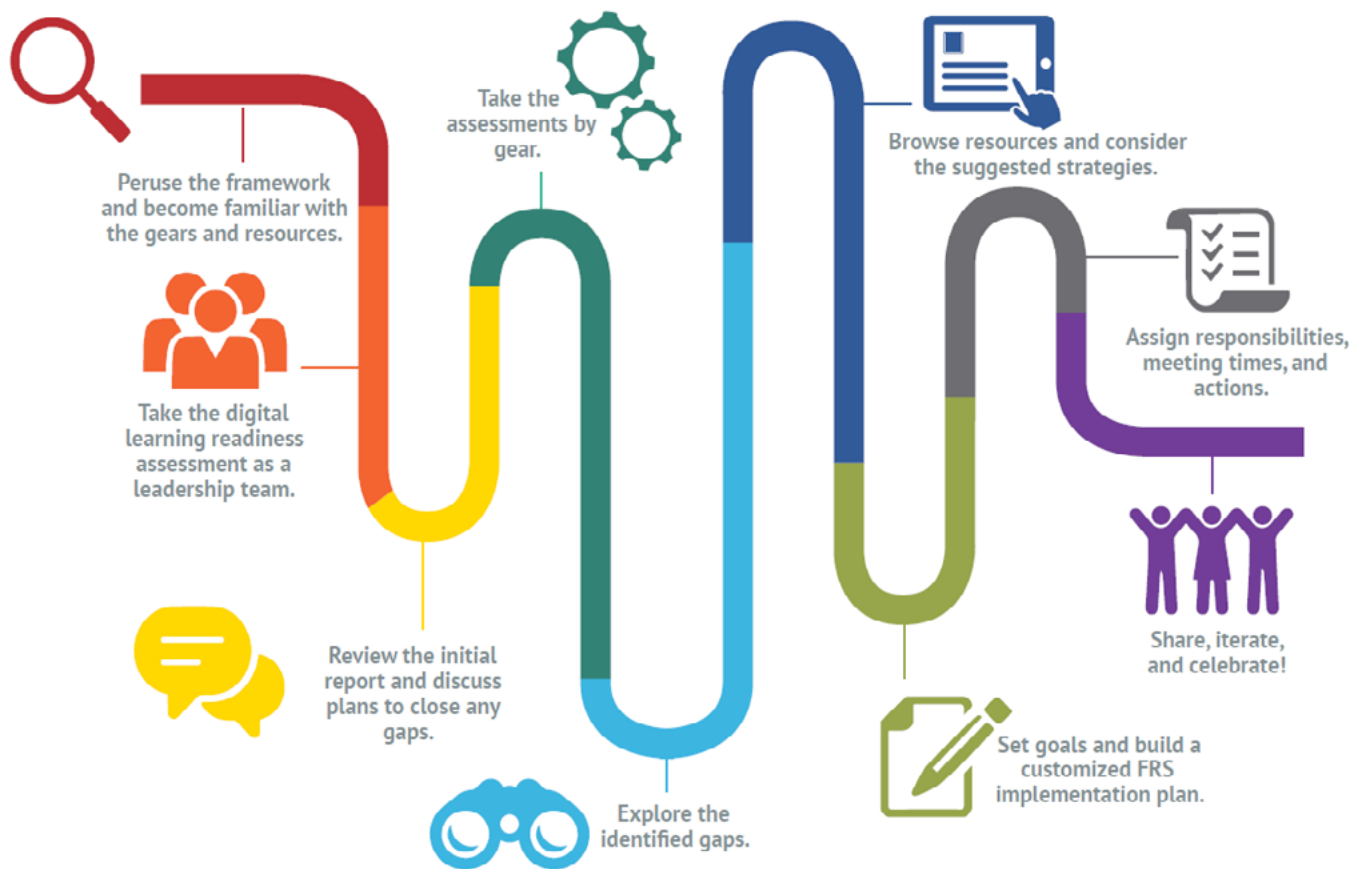


After completing the leadership self-assessment, each district team receives a customized report that analyzes the district's readiness across each of the seven gears. To support planning and implementation, the report highlights gaps in district readiness and offers customized implementation strategies and free resources developed by All4Ed, FRS, and more than sixty national and regional partners.

The FRS dashboard saves all analysis and planning data in a secure password-protected format. District leaders then can revisit the dashboard at any time to review their readiness reports and action plans, update their goals, identify new strategies and resources, and retake the assessments to monitor the progress of their implementation plans over time. Individual team data remains confidential and All4Ed and FRS do not share, market, or sell any district-identifiable data without written consent from the district team. For more information, see the dashboard's [privacy policy](#).

Using results and strategies suggested from the leadership self-assessment and individual gear assessments, the FRS dashboard allows district teams to develop a fully customized plan for implementing digital learning to personalize instruction for students. The U.S. Department of Education has recognized the FRS dashboard and district leadership assessment as valuable tools to support districts during the Title IV application process and with continuous improvement planning. Additionally, many states have incorporated the FRS dashboard into their requirements for districts eligible to receive funding through the Every Student Succeeds Act (ESSA).

To access the FRS interactive planning dashboard, visit dashboard.futurereadyschools.org. To learn more about other FRS programs that support district and school leaders, visit futureready.org.



The Alliance for Excellent Education (All4Ed) is a Washington, DC-based national policy, practice, and advocacy organization dedicated to ensuring that all students, particularly those underperforming and those historically underserved, graduate from high school ready for success in college, work, and citizenship. all4ed.org

Photo by Allison Shelley/The Verbatim Agency for [American Education: Images of Teachers and Students in Action](#)